

WENDOVER ART GROUP

DESIGNER MIRROR COLLECTION

Since 2005, Wendover Art Group has transformed from a poster print company into a premier American manufacturer of high-quality artwork, mirrors, lighting, textiles, and more. Our latest offering, a designer mirror collection with Lillian August Studio, highlights our dedication to exceptional craftsmanship and innovative design. Each piece in this collection is carefully curated to enhance any space with elegance and style. Consider Wendover Art Group your go-to source for beautifully crafted products.

OUR STORY

Starting as a small poster print company in 2005, Wendover Art Group has grown into a multi-channel American manufacturer of high-quality artwork, mirrors, wallcoverings, lighting, textiles, bed swings, and sculptures for top interior designers and brands in both the residential and commercial markets.

From its headquarters in Largo, FL (Tampa/St. Petersburg), Wendover maintains its commitment to producing artisanal creations that are domestically made, provide superior value to customers, invest in technology and talent, and strive to be The Source for Art. Building upon their luxury portfolio, in 2022, Wendover acquired Lowcountry Originals, a South Carolina manufacturer of lighting, bed swings, sculptures, and mirrors. In 2023, Wendover acquired Kevin O'Brien Studio, a textile company designed and handcrafted in Philadelphia, Pennsylvania, and Friedman Brothers, a 120-year-old decorative mirror and furniture accessories company based in Miami, Florida. Stronger together, Wendover, Lowcountry Originals, Kevin O'Brien Studio, and Friedman Brothers are building and expanding their product capabilities and offerings. All products are available through a network of sales representatives, online, and in showrooms in High Point, Atlanta, Dallas, and Las Vegas.



OUR PROMISE TO OUR CUSTOMERS

We support your design aesthetic and success by keeping three promises to you:

Partnership: We collaborate with you to bring your ideas to life within budget and quality standards. Our state-of-the-art facilities are built to manage the creation of your art, leading to a shorter lead time.

One Source for Art: We source the art. We design the art. We make the art. Our skilled team of design professionals and in-house artisans stay ahead of trends in art and design. Each piece of art is crafted with care by skilled members of our team that take pride in its creation.

Proactive Service: We have your back, practice “no surprises,” and provide respectful, timely, complete, and honest communication. We guarantee the quality of our work and delivery that is accurate, on time, and intact, but should we make a mistake—we fix it.

You can count on us to address your needs creatively and thoughtfully with industry-defining standards for products and quality. We appreciate your partnership and would like you to think of us as The Source for Art.





Paolo Mirror

LAM01-3754-M07-G03

Designed by Lillian August Studio, the Paolo Mirror is modern classic, inspired by an Italian mid-century modern antique. Our beveled 4 panel mirror is wrapped in a low-profile steel frame with center rosette. The Paolo Mirror is available in Light Brushed Brass and Antique Silver Leaf.

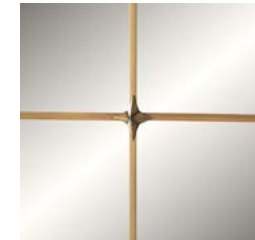
37"W x 54"H x 1.25"D

Beveled Glass

Light Brushed Brass Finish

Non-Customizable

All mirror frames are crafted from kiln-dried beech wood and come with attached hanging hardware. The mirrors are 5.5mm thick and feature safety glass backing.





Paolo Mirror

LAM01-3754-M11-G03

Designed by Lillian August Studio, the Paolo Mirror is modern classic, inspired by an Italian mid-century modern antique. Our beveled 4 panel mirror is wrapped in a low-profile steel frame with center rosette. The Paolo Mirror is available in Antique Silver Leaf and Light Brushed Brass.

37"W x 54"H x 1.25"D

Beveled Glass

Antique Silver Leaf on Stainless Finish

Non-Customizable

All mirror frames are crafted from kiln-dried beech wood and come with attached hanging hardware. The mirrors are 5.5mm thick and feature safety glass backing.





Soho Mirror

LAM02-2347-M07-G03

Designed by Lillian August Studio, our Soho Mirror is a sophisticated modern interpretation of a mid-century classic design. Our beveled mirror is wrapped in a low-profile steel frame that is offered in both a Light Brushed Brass and hand applied Antique Silver Leaf.

23"W x 47"H x 1.25"D

Beveled Glass

Light Brushed Brass Finish

Non-Customizable

All mirror frames are crafted from kiln-dried beech wood and come with attached hanging hardware. The mirrors are 5.5mm thick and feature safety glass backing.





Soho Mirror

LAM02-2347-M11-G03

Designed by Lillian August Studio, our Soho Mirror is a sophisticated modern interpretation of a mid-century classic design. Our beveled mirror is wrapped in a low-profile steel frame that is offered in both hand applied Antique Silver Leaf and Light Brushed Brass.

23"W x 47"H x 1.25"D

Beveled Glass

Antique Silver Leaf on Stainless Finish

Non-Customizable

All mirror frames are crafted from kiln-dried beech wood and come with attached hanging hardware. The mirrors are 5.5mm thick and feature safety glass backing.





Cathedral Floor Mirror

LAM03-5590-W04-G02

Designed by Lillian August Studio, our oversized Cathedral mirror is a dramatic center piece for any room. This 9 panel flat mirror is both carved and finished by hand. The solid wood frame is covered with Antiqued Gold Leaf and combined with elegant casted brass rosettes.

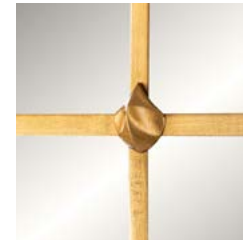
55"W x 90"H x 2"D

Non-Beveled Glass

Gold Leaf-Bullion Finish

Non-Customizable

All mirror frames are crafted from kiln-dried beech wood and come with attached hanging hardware. The mirrors are 5.5mm thick and feature safety glass backing.





Marcel Round Mirror

LAM04-50RD-LSV30-G03

Designed by Lillian August Studio, recalling the art deco French style of the 1930's, the Marcel Mirror is an eye-catching addition to any room. The 5" concave frame is covered in a hand applied parchment colored Vellum. The mirror is available in two sizes: 35" and 50".

50"DIA x 1.5"D

Beveled Glass

Natural Vellum with 30% Sheen Finish

Non-Customizable

All mirror frames are crafted from kiln-dried beech wood and come with attached hanging hardware. The mirrors are 5.5mm thick and feature safety glass backing.





Marcel Round Mirror

LAM04-35RD-LSV30-G03

Designed by Lillian August Studio, recalling the art deco French style of the 1930's, the Marcel Mirror is an eye-catching addition to any room. The 5" concave frame is covered in a hand applied parchment colored Vellum. The mirror is available in two sizes: 35" and 50".

35"DIA x 1.5"D

Beveled Glass

Natural Vellum with 30% Sheen Finish

Non-Customizable

All mirror frames are crafted from kiln-dried beech wood and come with attached hanging hardware. The mirrors are 5.5mm thick and feature safety glass backing.





Avalon Round Mirror

LAM05-50RD-FS01-G03

Designed by Lillian August Studio, the unique round concave shape of our Avalon Mirror is an eye-catching addition to any room. The 5" concave frame is accented in antique brass and striking charcoal Grey Faux-Shagreen.

50"DIA x 1.5"D

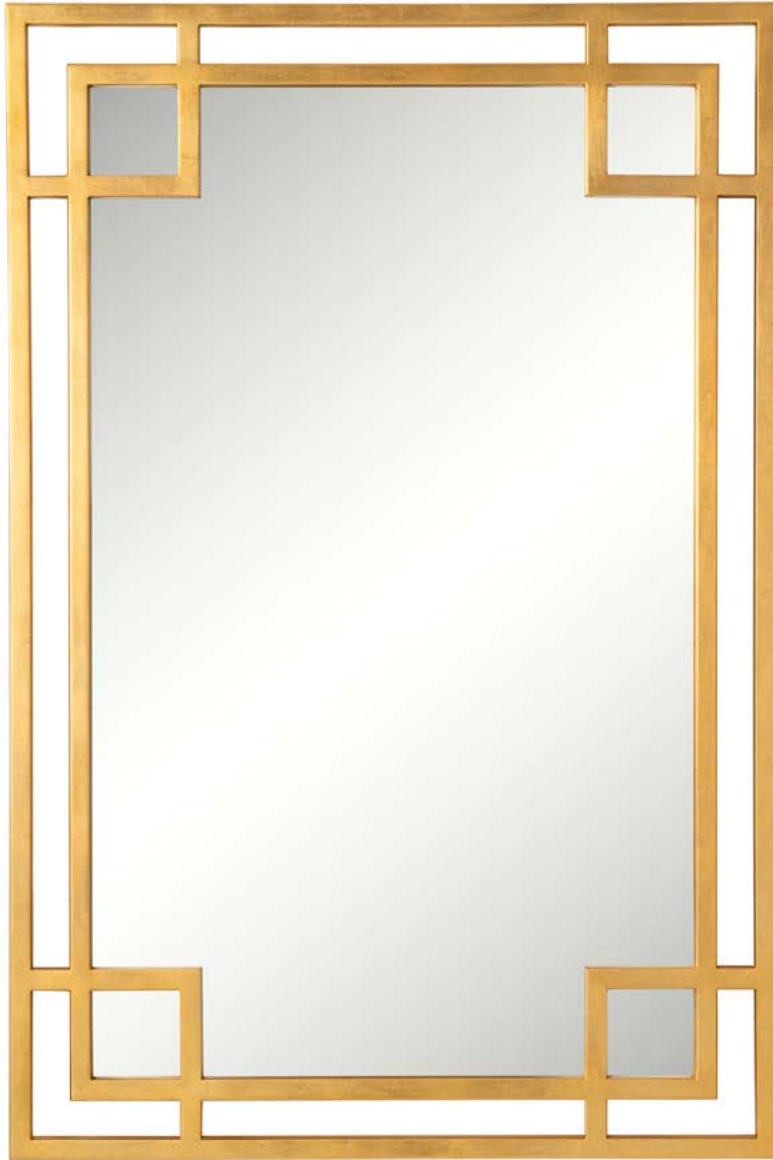
Beveled Glass

Grey Shagreen Finish

Non-Customizable

All mirror frames are crafted from kiln-dried beech wood and come with attached hanging hardware. The mirrors are 5.5mm thick and feature safety glass backing.





Charleston Mirror

LAM06-3654-M12-G02

Designed by Lillian August Studio, the unique sleek and sophisticated architectural angles of our Charleston Mirror, provides a modern vibe to the room. The stainless steel frame holds a flat mirror and is finished by hand with an Antique Gold Leaf finish.

36"W x 54"H x 1.5"D

Non-Beveled Glass

Antique Gold Leaf on Stainless Finish

Non-Customizable

All mirror frames are crafted from kiln-dried beech wood and come with attached hanging hardware. The mirrors are 5.5mm thick and feature safety glass backing.





Austin Mirror

LAM07-4884-W05-G03

Designed by Lillian August Studio, this handsome hand carved floor mirror is beveled and comes in two finishes: Dark French Oak and Reclaimed Natural French Oak.

48"W x 84"H x 2"D

Beveled Glass

Dark French Oak Finish

Non-Customizable

All mirror frames are crafted from kiln-dried beech wood and come with attached hanging hardware. The mirrors are 5.5mm thick and feature safety glass backing.





Austin Mirror

LAM07-4884-W08-G03

Designed by Lillian August Studio, this handsome hand carved floor mirror is beveled and comes in two finishes: Reclaimed Natural French Oak and Dark French Oak.

48"W x 84"H x 2"D

Beveled Glass

Reclaimed Natural French Oak Finish

Non-Customizable

All mirror frames are crafted from kiln-dried beech wood and come with attached hanging hardware. The mirrors are 5.5mm thick and feature safety glass backing.





Taj Mirror

LAM08-2948-HD08-G03

Designed by Lillian August Studio, our beveled rectangular Taj Mirror has a clean organic modern vibe that can work in a variety of interiors. Each of the natural mother of pearl tiles are laid by hand and the mirror is wrapped in a soft brass frame.

29.25"W x 48.5"H x 1.25"D

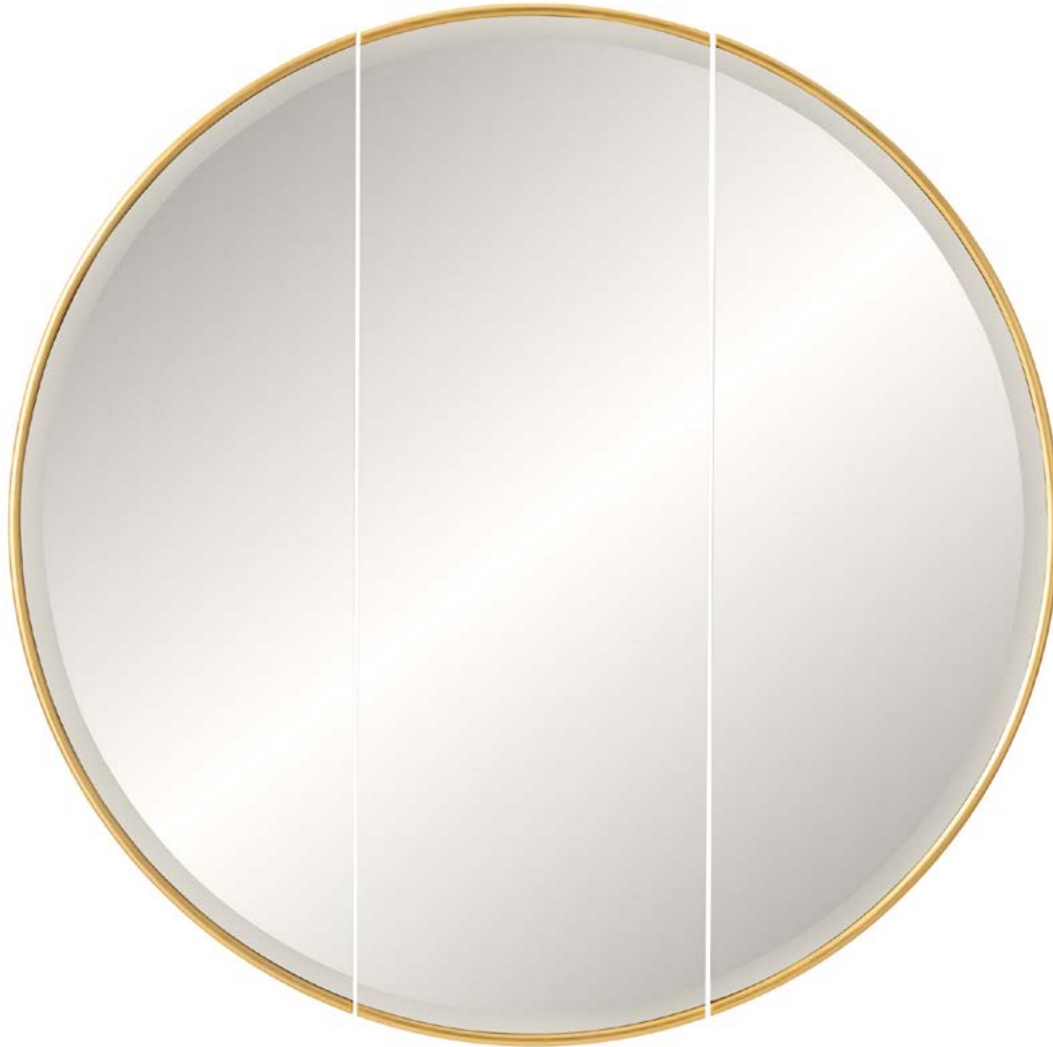
Beveled Glass

White and Grey Mother of Pearl Triangle Finish

Non-Customizable

All mirror frames are crafted from kiln-dried beech wood and come with attached hanging hardware. The mirrors are 5.5mm thick and feature safety glass backing.





Mercer Round Mirror

LAM09-60RD-WLS01-G03

The Mercer Round Mirror, designed by Lillian August Studio, features a striking modern triptych design comprising three separate mirrors to form a large round mirror. Each mirror is framed in a slim wood profile with beveled glass edges and is available in a beautiful Hand Finished Gold or Silver Leaf option.

60" DIA x 3"D

Beveled Glass

Gold Leaf Finish

Non-Customizable

All mirror frames are crafted from kiln-dried beech wood and come with attached hanging hardware. The mirrors are 5.5mm thick and feature safety glass backing.





Mercer Round Mirror

LAM09-60RD-WLS02-G03

The Mercer Round Mirror, designed by Lillian August Studio, features a striking modern triptych design comprising three separate mirrors to form a large round mirror. Each mirror is framed in a slim wood profile with beveled glass edges and is available in a beautiful Silver Leaf or Hand Finished Gold option.

60" DIA x 3"D

Beveled Glass

Silver Leaf Finish

Non-Customizable

All mirror frames are crafted from kiln-dried beech wood and come with attached hanging hardware. The mirrors are 5.5mm thick and feature safety glass backing.





Brixton Mirror

LAM10-6035-HD17-G03

Designed by Lillian August Studio, characterized by its impressive scale and stunning walnut burl and brass finished frame, the Brixton Mirror adds a strong stately decorative element to any room. The mirror is beveled and looks fantastic above a sofa or over a cabinet in a dining room or entry hall.

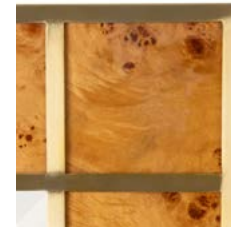
35.5"W x 60"H x 2"D

Beveled Glass

Glossy Walnut Burl Clear Top Coat Finish

Non-Customizable

All mirror frames are crafted from kiln-dried beech wood and come with attached hanging hardware. The mirrors are 5.5mm thick and feature safety glass backing.





Tribeca Mirror

LAM11-3560-LSM01-G03

Designed by Lillian August Studio, elegant, chic and sophisticated our Tribeca Mirror is framed in a hand polished stainless steel, combined with beveled glass giving it a simple and stylish profile.

35"W x 60"H x 2"D

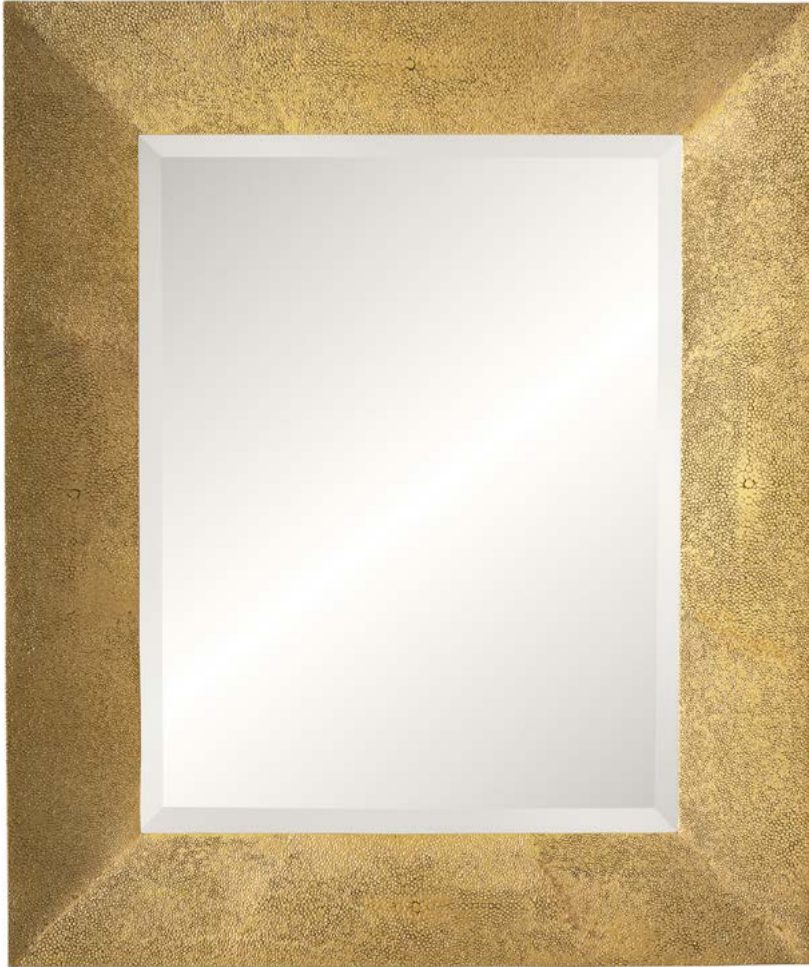
Beveled Glass

Polished Silver Finish

Non-Customizable

All mirror frames are crafted from kiln-dried beech wood and come with attached hanging hardware. The mirrors are 5.5mm thick and feature safety glass backing.





Regency Mirror

LAM12-2530-FS02-G03

Designed by Lillian August Studio, a chic interpretation of a classic 1970's Post Modernism design, our Regency Mirror has beveled glass and is wrapped in a gold faux Shagreen that can easily blend in with a variety of decors

25"W x 30"H x 1.75"D

Beveled Glass

Metallic Gold Shagreen Finish

Non-Customizable

All mirror frames are crafted from kiln-dried beech wood and come with attached hanging hardware. The mirrors are 5.5mm thick and feature safety glass backing.





Sinatra Mirror

LAM14-3042-HD17-G03

Designed by Lillian August Studio, the Sinatra Mirror is characterized by its elegant and sophisticated octagonal shape. This beveled mirror is held in a Walnut Burl frame which is made by hand.

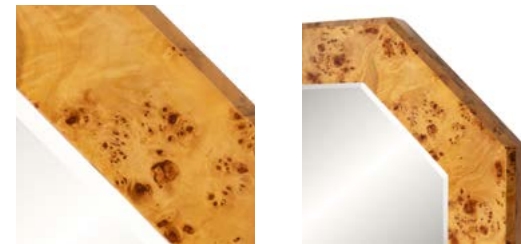
30"W x 42"H x 4"D

Beveled Glass

Glossy Walnut Burled Clear Top Coat Finish

Non-Customizable

All mirror frames are crafted from kiln-dried beech wood and come with attached hanging hardware. The mirrors are 5.5mm thick and feature safety glass backing.





Hamptons Mirror

LAM16-4052-LW02-G03

Designed by Lillian August Studio, as casual as it is sophisticated, our Hamptons Mirror has a rounded frame profile is hand wrapped in a natural raffia. The corners are accented with antique brass nail heads and beveled glass.

40"W x 52"H x 1.25"D

Beveled Glass

Natural Light Linen Finish

Non-Customizable

All mirror frames are crafted from kiln-dried beech wood and come with attached hanging hardware. The mirrors are 5.5mm thick and feature safety glass backing.





Telluride Mirror

LAM17-4755-L09-G03

Designed by Lillian August Studio, our Telluride Mirror is beveled and made of substantial rounded moldings covered in dark brown top-grain leather with hand stitched seams. As with all high-quality natural leather there will be slight variation in color, as well as subtle markings to add to its distressed look.

47"W x 55"H x 2.5"D

Beveled Glass

Top-Grain Dark Brown Leather Finish

Non-Customizable

All mirror frames are crafted from kiln-dried beech wood and come with attached hanging hardware. The mirrors are 5.5mm thick and feature safety glass backing.





Telluride Round Mirror

LAM19-36RD-L09-G03

Designed by Lillian August Studio, the elegant simplicity of our porthole shaped Telluride mirror, makes a bold statement. With a beveled mirror, the rounded raised frame is covered in luxurious dark brown top-grain leather. As with all-natural leather there will be slight variation in color, as well as subtle markings to add to its distressed look.

36"DIA x 2"D

Beveled Glass

Top-Grain Brown Leather Finish

Non-Customizable

All mirror frames are crafted from kiln-dried beech wood and come with attached hanging hardware. The mirrors are 5.5mm thick and feature safety glass backing.





Hendrix Floor Mirror

LAM18-4478-L13-G03

Designed by Lillian August Studio, our Hendrix Floor Mirror is beveled and made of substantial rounded moldings covered in a natural top-grain leather. As with all high-quality natural leathers there will be slight variation in color, as well as subtle markings to add to its distressed look. Its offered in a luxurious Cognac and Taupe leather.

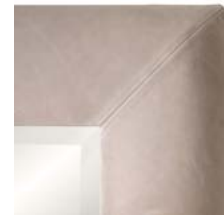
44"W x 78"H x 2"D

Beveled Glass

Taupe Leather

Non-Customizable

All mirror frames are crafted from kiln-dried beech wood and come with attached hanging hardware. The mirrors are 5.5mm thick and feature safety glass backing.





Hendrix Floor Mirror

LAM18-4478-L12-G03

Designed by Lillian August Studio, our Hendrix Floor Mirror is beveled and made of substantial rounded moldings covered in a natural top-grain leather. As with all high-quality natural leathers there will be slight variation in color, as well as subtle markings to add to its distressed look. Its offered in a luxurious Taupe and Cognac leather.

44"W x 78"H x 2"D

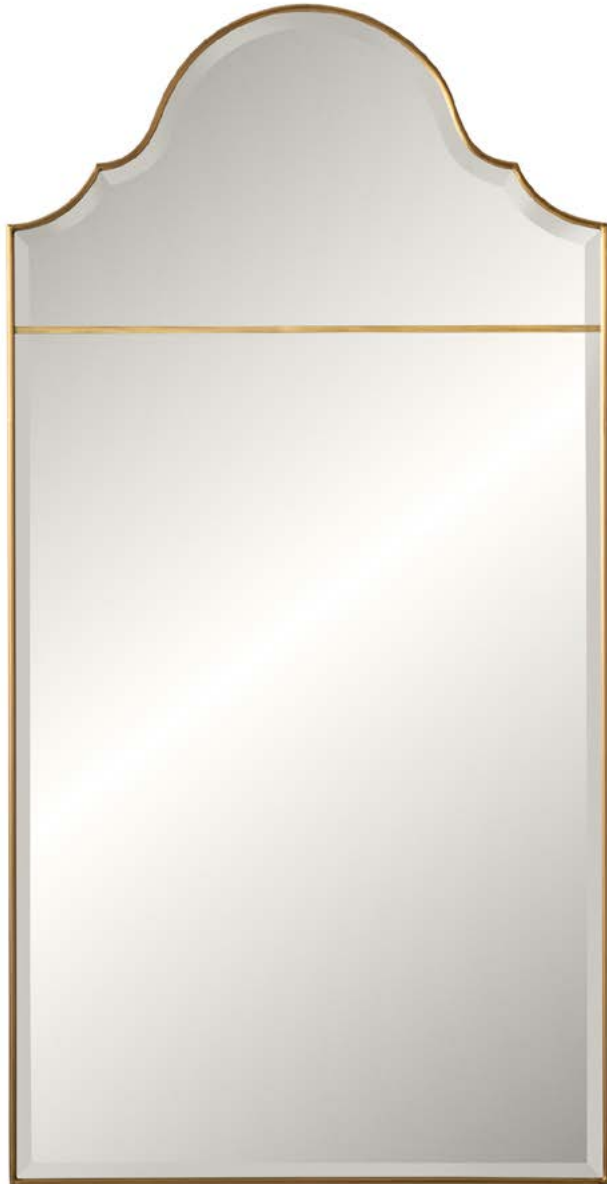
Beveled Glass

Cognac Leather

Non-Customizable

All mirror frames are crafted from kiln-dried beech wood and come with attached hanging hardware. The mirrors are 5.5mm thick and feature safety glass backing.





Astor Mirror

LAM21-3059-M07-G03

Designed by Lillian August Studio, A tall and sophisticated silhouette, the Astor Mirror is designed to hang alone or above your favorite chest. The hand finished gold leaf frame holds two beveled glass panels to create an updated traditional piece.

30"W x 59"H x 1.25"D

Beveled Glass

Light Brushed Brass Finish

Non-Customizable

All mirror frames are crafted from kiln-dried beech wood and come with attached hanging hardware. The mirrors are 5.5mm thick and feature safety glass backing.





Bowie Mirror

LAM22-3955-WLS01WLS02-G03

Designed by Lillian August Studio, inspired by 19th century French beveled salon mirrors, the Bowie Mirror has a unique double frame, finished by hand with both gold leaf and an ebonized finish. The flowing curves of the silhouette creates a beautiful understated elegance.

39"W x 55"H x 3.5"D

Beveled Glass

Black and Gold Finish

Non-Customizable

All mirror frames are crafted from kiln-dried beech wood and come with attached hanging hardware. The mirrors are 5.5mm thick and feature safety glass backing.





Citrine Floor Mirror

LAM23-4278-TP190332-G03

Designed by Lillian August Studio, a crisp and contemporary take on a wrapped linen mirror. Our beveled glass Citrine floor mirror is covered in natural linen that works perfectly in a beach house or bedroom sanctuary.

42"W x 78"H x 3.5"D

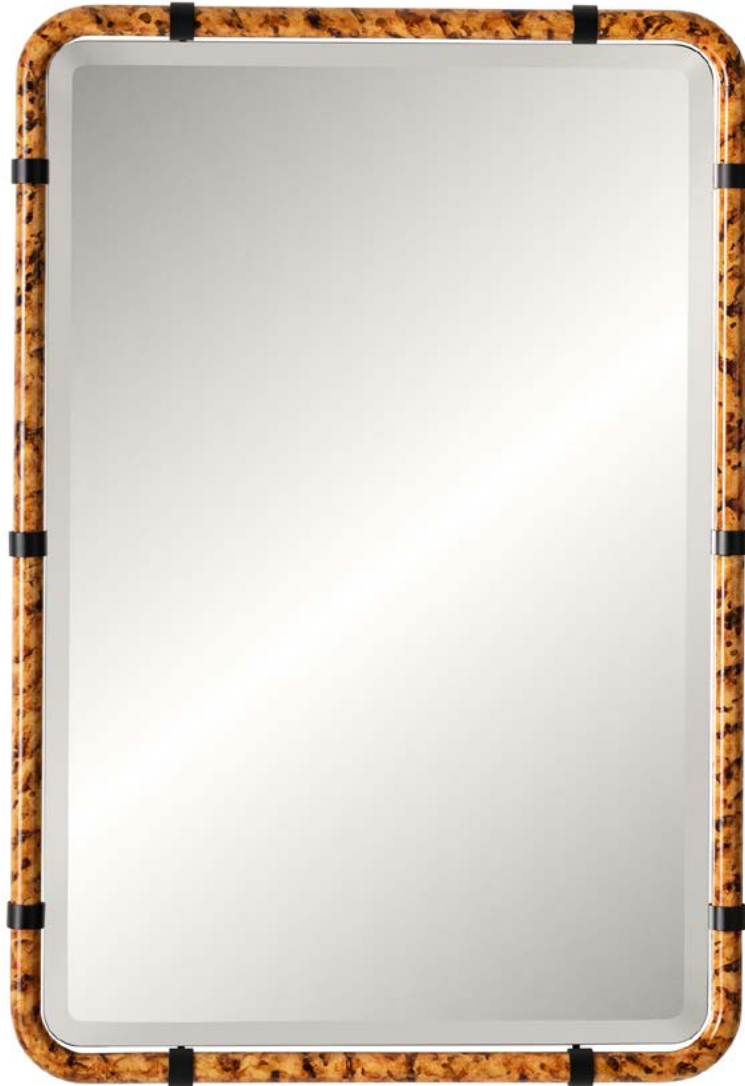
Beveled Glass

White with Gold Thread Linen Finish

Non-Customizable

All mirror frames are crafted from kiln-dried beech wood and come with attached hanging hardware. The mirrors are 5.5mm thick and feature safety glass backing.





Club Drive Mirror

WEN01-2435-LSHP1-G02

Designed by Wendover Studio, this fresh take on a classic mirror is sure to brighten any room. We've taken, a natural bamboo frame with a hand painted traditional French Tortoise Shell finish, wrapped it around a flat glass mirror and added black iron cuff details.

24"W x 35"H x 1.5"D

Non-Beveled Glass

Tortoise Shell Finish

Non-Customizable

All mirror frames are crafted from kiln-dried beech wood and come with attached hanging hardware. The mirrors are 5.5mm thick and feature safety glass backing.





Malibu Round Mirror

WEN02-29RD-LSCR1-G02

Designed by Wendover Studio, this organic round frame is lively and bright in a museum white gesso finish, with flat glass mirror.

29"DIA x 2"D

Non-Beveled Glass

Museum White Finish

Non-Customizable

All mirror frames are crafted from kiln-dried beech wood and come with attached hanging hardware. The mirrors are 5.5mm thick and feature safety glass backing.

